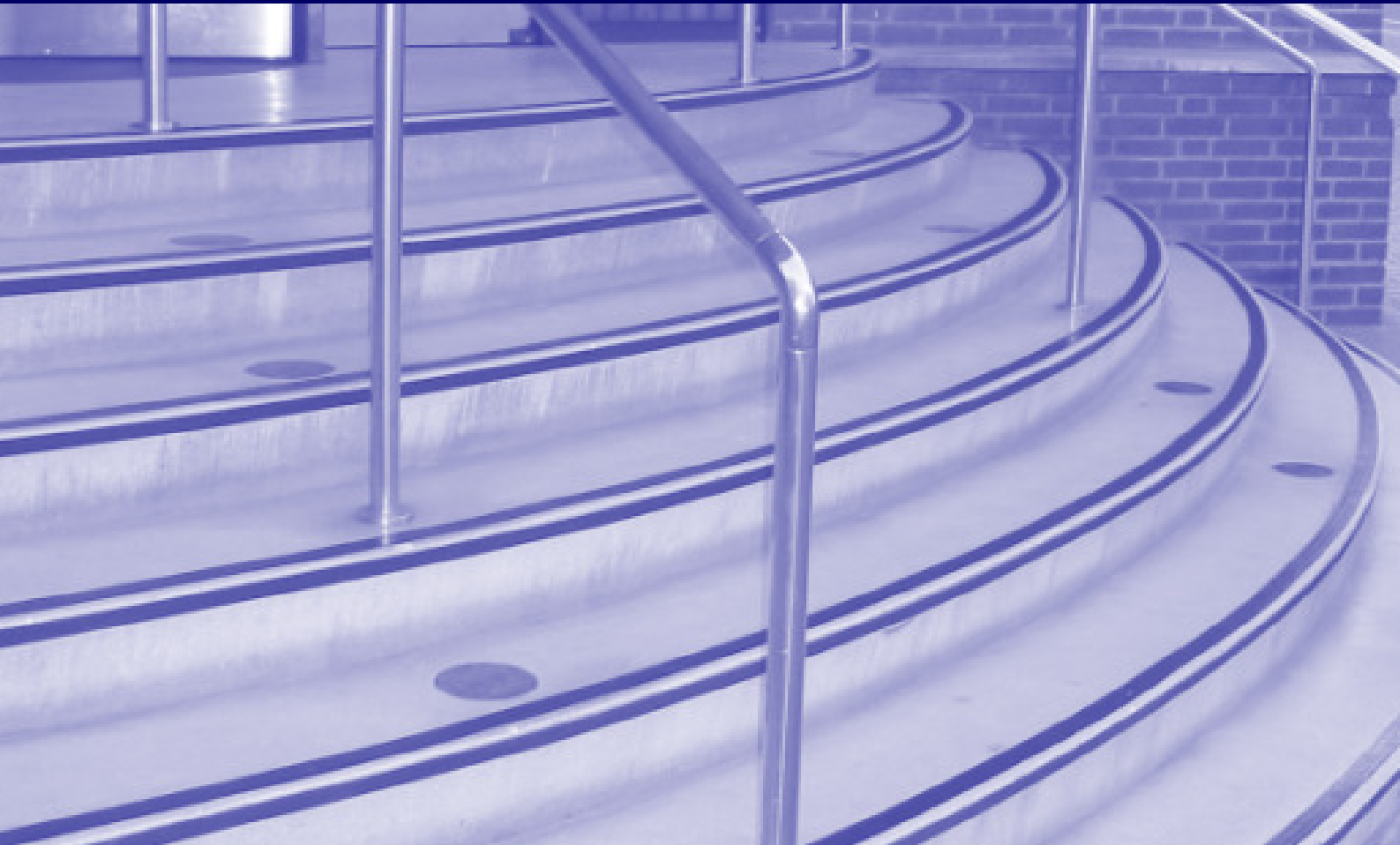


# KGRIP

BESPOKE ANTI SLIP SOLUTIONS



Supplier and Installer of high quality, easy to install, slip resistant surfaces for step and stair applications

[www.visulsystems.com](http://www.visulsystems.com)

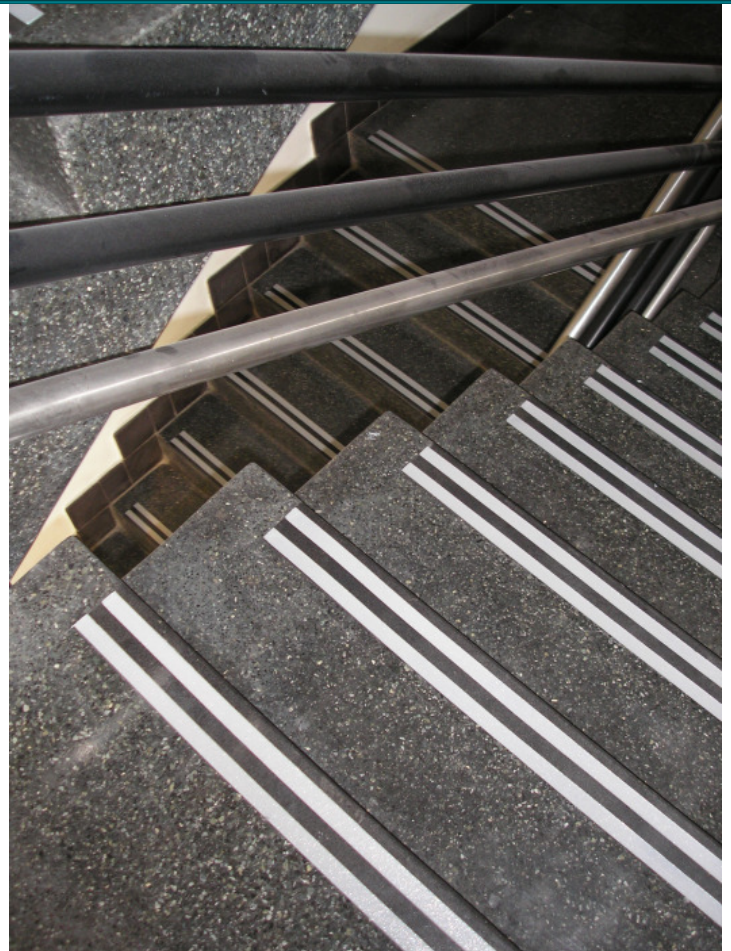
# Introduction

**As part of a multinational civil engineering and construction organisation specialising in DDA (Disability Discrimination Act 1994) compliance products. Visul Systems are leading suppliers and installers of K-Grip a high quality, easy to install, slip resistant surface for architectural step and stair applications.**

K-Grip is a specialist system designed for use in various applications. It combines an extremely robust construction with a high traction surface.

K-Grip revolutionises the way in which anti-slip is applied and is the most versatile, durable and flexible product of its kind. It is available in a wide range of attractive colours to help ensure DDA compliance, is easy to apply, rapid curing and can be applied to most surfaces.

K-Grip can be applied in bands, in circles or indeed in any preferred shape, making it ideal for creating signage, company logos and directional markers mainly in areas of architectural significance.



# Product Information



## Product Description

K-Grip is a proven slip-resistant medium for walking surfaces and for all solid substrates, including stone, concrete, marble, granite, glass, metal and timber.

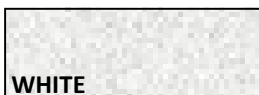
Applied by means of a special applicator gun, the two part resin based system with aggregates is rapid curing and therefore can be walked on within a matter of a few hours.

K-Grip is durable and can be used on both internal as well as external steps and stairs making it suitable for use in food factories, railway stations, car parks, utility plants, hospitals, prisons, police stations and schools.

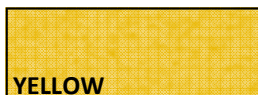
## System Benefits

- Quick and Easy to Install
- Excellent Anti-Slip Properties
- No Heavy Duty Plant Required
- Traffic within 2 hours
- No surface excavation required
- Adheres to most standard surfaces
- Environmentally Friendly - No noise pollution
- No Hot Works

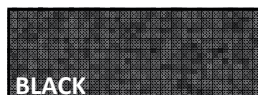
## Colours Available



WHITE



YELLOW



BLACK



GREY



PHOTOLUMINESCENT



*\* The colours indicated above are intended as a guide only.  
Printed representation of colours can significantly alter their appearance.  
Visul Systems cannot be held responsible in any way for any variance  
between these colours and those are intended to match.*



## HEAD OFFICE

Kingston House  
3 Walton Road  
Pattinson North  
Washington  
Tyne & Wear  
NE38 8QA  
United Kingdom

T: +44 (0)191 402 1960  
F: +44 (0)191 402 1906  
E: [info@visulsystems.com](mailto:info@visulsystems.com)

Version 1.1