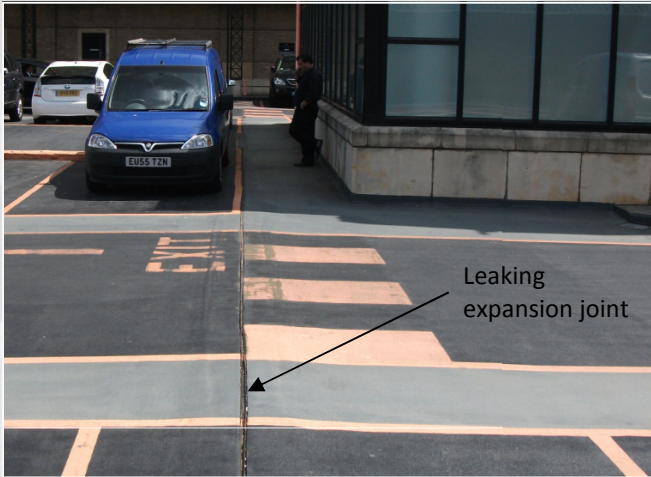


USL StructureCare solves 'joint' pain

The roof top car park of a prestigious shopping centre in the Bayswater area of London has suffered over recent years from the effects of leaking expansion joints. This was caused by a weak point developing between the interface of the mastic asphalt and proprietary joint system.



USL's engineering department who has in excess of 30 years experience in expansion joint technology were on hand to recommend that all 43 metres of the problematic joint be removed and replaced with a 'UCP' 50. The 'UCP' 50 or Universal Car Park Joint 50 was derived from the companies BEJ expansion joint system a market leading product on super-elevated structures.

The 'UCP' 50 expansion joint system has been carefully developed to provide a safe, efficient and economical method of sealing deck movement joints. In addition, the UCP joint is watertight, provides quiet comfortable riding characteristics, is installed quickly keeping pedestrian disruption to a minimum. USL are unique in that they manufacture, supply and install the 'UCP', ensuring that responsibility for its performance falls under one company.

The works

- Saw cut and remove existing concrete shoulders either side of existing joint to a width not exceeding 200mm wide by 60mm deep each side to accommodate new UCP joint.
- Removing and replacing a small section of barrier to allow full installation.
- Removal and replacing of footpath slabs after installation of 43 metres of expansion joint.
- Manufacture and installation of two 90° change of direction sections of aluminium rail at the dog leg section.



Conclusion

USL StructureCare's Technical Manager, Anthony Wallis, said: "it was a pleasure to work with the centre management to provide a fully integrated expansion solution which was met by the full satisfaction of the client".

For more information on USL StructureCare's products and services please visit

www.structurecare.com